

W Series Remotes

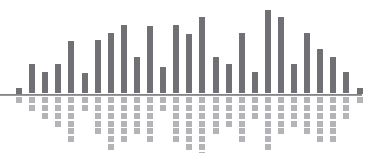
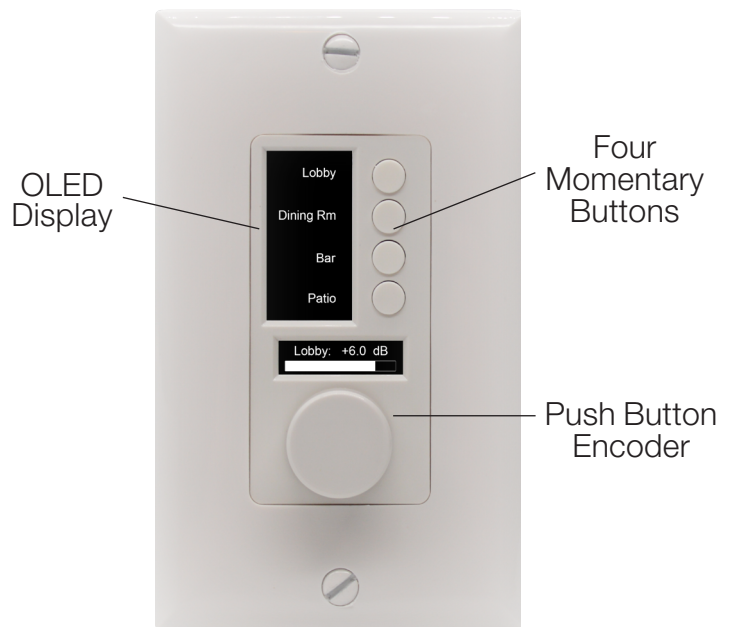
The W Series remotes offer IP control for Symetrix Composer™ based DSPs



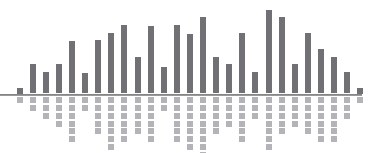
Available in white and black, in both US and European wall box sizes

Product Highlights

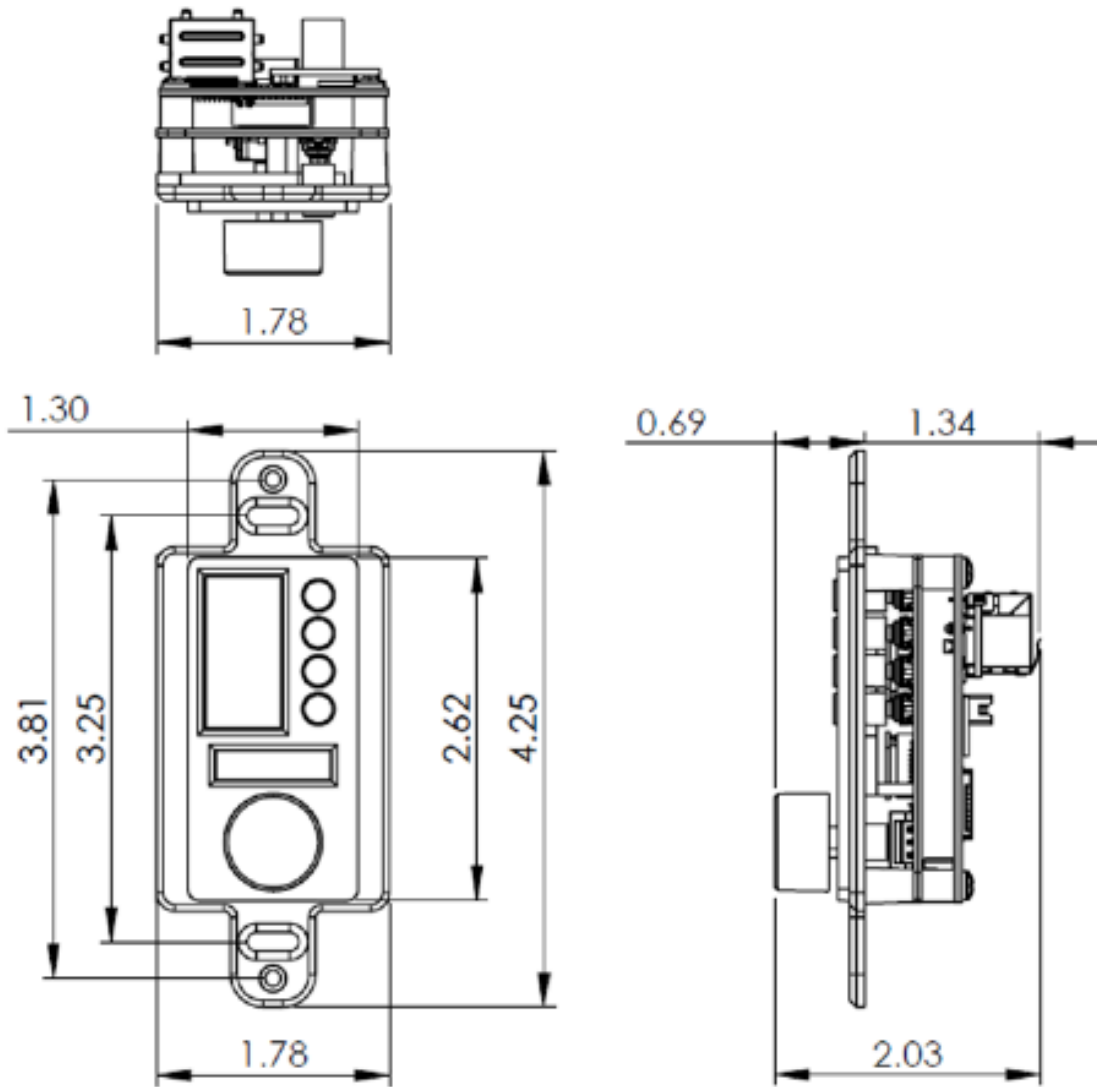
- Simple deployment with standard PoE switch
- Mounts in a 1.375 inch, or 35mm, shallow-depth electrical box
- Flexible display accommodates the use of Symbols to simplify operation and overcome language barriers.
- Simple and easy end user control
- Dramatically increases the number of control devices that can be added to a Symetrix based system
- Perfect for Houses of Worship, Hospitality, Education, Performance/Live Sound and Conferencing
- Available in 3 different configurations



	W1	W2	W3	W4
CONTROL				
User Interface	One rotary encoder with push-button knob	4 push-button switches	One rotary encoder with push-button knob and 4 push-button switches	One rotary encoder with push-button knob and 8 push-button switches
DISPLAY				
Display Type	High Contrast OLED	High Contrast OLED	High Contrast OLED	High Contrast OLED
Viewable Area	.91" (23.11mm) Diagonal	1.3" (33.02mm) Diagonal	.91" (23.11mm) and 1.3" (33.02mm) Diagonal	.91" and 2x 1.3" (33.02mm) Diagonal
SYSTEM DETAILS				
Physical Network Layer	Ethernet	Ethernet	Ethernet	Ethernet
Network Connector	RJ-45	RJ-45	RJ-45	RJ-45
Network Transmission Speed	100 Mbps	100 Mbps	100 Mbps	100 Mbps
PoE Power	802.3af Class 0	802.3af Class 0	802.3af Class 0	802.3af Class 0
Device Width (US)	1.78" Single Gang Decora	1.78" Single Gang Decora	1.78" Single Gang Decora	3.6" Dual Gang Decora
Device Depth (US)	1.34"	1.34"	1.34"	1.34"
Device Height (US)	4.25"	4.25"	4.25"	4.25"
Certifications	IEC 60065 (safety), EN 55032, EN 55103-2, EN 61000-3-2, EN 61000-3-3 (EMC-International), FCC Part 15 (EMC-USA), RoHS (health/environmental)	IEC 60065 (safety), EN 55032, EN 55103-2, EN 61000-3-2, EN 61000-3-3 (EMC-International), FCC Part 15 (EMC-USA), RoHS (health/environmental)	IEC 60065 (safety), EN 55032, EN 55103-2, EN 61000-3-2, EN 61000-3-3 (EMC-International), FCC Part 15 (EMC-USA), RoHS (health/environmental)	IEC 60065 (safety), EN 55032, EN 55103-2, EN 61000-3-2, EN 61000-3-3 (EMC-International), FCC Part 15 (EMC-USA), RoHS (health/environmental)



W Series Dimensions in inches (US Version)



For more information on the W Series Remotes, please visit www.symetrix.co

